

# Prefabricated Meter Sets and Components



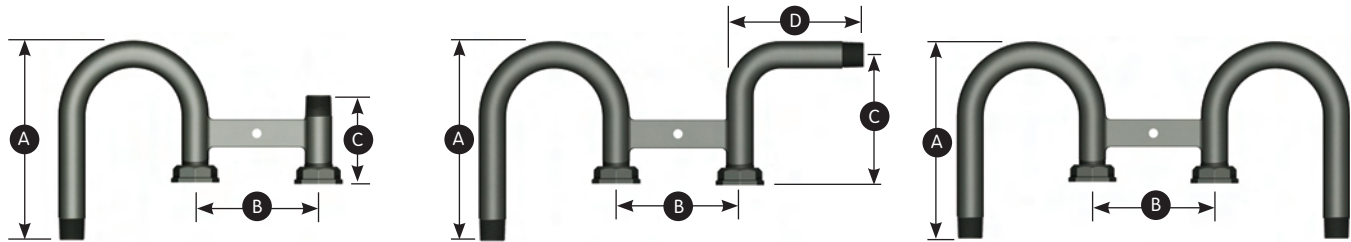
# Elster Perfection Prefabricated Meter Set Assemblies

Elster Perfection’s prefabricated products allow utilities to implement more uniform standards for all their meter set installations.

For years, installation crews have invested significant time fabricating meter sets in the field. Today, more and more utilities recognize they can improve the productivity of their field crews and the appearance of the finished product by using Elster Perfection prefabricated meter sets.

Our precision fabricated products allow you to simplify meter set installations, saving time and money. Elster Perfection prefabricated meter sets reduce the number of threaded joints required to complete an installation... saving time, improving safety, and prolonging service life by eliminating potential leak points.

## Standard Meter Set Configurations



### Style "A" - Straight Outlet

Inlet A	Flange B	Flange C	Outlet D	Part #
3/4" NPT	10 LT	10 LT	3/4" NPT	34584
3/4" NPT	Spr 1A	Spr 1A	1" NPT	34585
3/4" NPT	1" 20 LT	1" 20 LT	1" NPT	34586
1" NPT	20 LT	20 LT	1" NPT	34587
3/4" NPT	Spr 1A	Spr 1A	1" NPT	34588
1" NPT	1-1/4 Pitts	1-1/4 Pitts	1" NPT	34589

A	B	C
9"	6"	5"
228.6 mm	152.4 mm	127.0 mm

### Style "B" - 90° Outlet

Inlet A	Flange B	Flange C	Outlet D	Part #
3/4" NPT	10 LT	10 LT	3/4" NPT	34590
3/4" NPT	Spr 1A	Spr 1A	1" NPT	34591
3/4" NPT	1" 20 LT	1" 20 LT	1" NPT	34592
1" NPT	20 LT	20 LT	1" NPT	34593
1" NPT	Spr 1A	Spr 1A	1" NPT	34594
1" NPT	1-1/4 Pitts	1-1/4 Pitts	1" NPT	34595

A	B	C	D
9"	6"	5-1/2"	5-1/2"
228.6 mm	152.4 mm	139.7 mm	139.7 mm

### Style "C" - 180° Outlet

Inlet A	Flange B	Flange C	Outlet D	Part #
3/4" NPT	10 LT	10 LT	3/4" NPT	34610
3/4" NPT	Spr 1A	Spr 1A	1" NPT	34611
3/4" NPT	1" 20 LT	1" 20 LT	1" NPT	34612
1" NPT	20 LT	20 LT	1" NPT	34613
1" NPT	Spr 1A	Spr 1A	1" NPT	34614
1" NPT	1-1/4 Pitts	1-1/4 Pitts	1" NPT	34615

A	B
9"	6"
228.6 mm	152.4 mm

E-coat/Polyester is standard coating. Specifications available upon request.  
For styles B and C, offset outlets can be specified.

# Components, Manifolds, and Custom Assemblies

Elster Perfection meter loops, bends, swivels and meter manifolds/headers can simplify your meter set installations.

Our precision fabricated products are ideal for both single dwelling and multiple family/commercial applications. Elster Perfection prefabricated meter set components simplify installations,

reduce time and labor in the field assembling multiple joints, and reduce the number of stock codes and items to inventory.

## Meter Set Installation Components



### Meter Ells and Loops

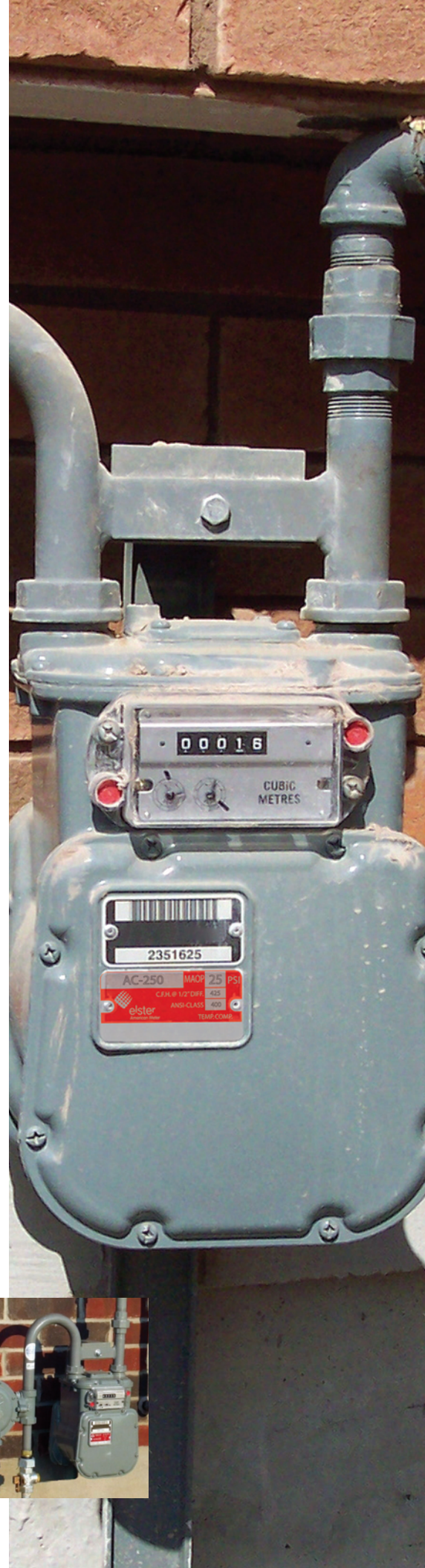
Elster Perfection's prebent meter loop potentially eliminates four joints and our meter ell eliminates two joints. These products can be supplied threaded or with formed-end swivels and swivel nuts to match up perfectly to your meter.

### Multiple-Meter Manifolds

Elster Perfection's prefabricated multiple-meter manifold makes installation easy and greatly reduces the number of threaded joints. From two drops (meters) up to 10 drops, we have the product to meet your requirements.

## Elster Perfection Coating Options

Elster Perfection's standard coating is polyester over E-coat paint. This superior coating combination provides not only UV protection but impact protection as well. Meter sets and manifolds can also be shipped coated with epoxy powder, zinc plating or painted coatings to your specifications.



## About Elster Group

A world leader in advanced metering infrastructure, integrated metering, and utilization solutions to the gas, electricity and water industries. Elster's metering and system solutions reflect over 170 years of knowledge and experience in measuring precious resources and energy.

Elster provides solutions and advanced technologies to help utilities more easily, efficiently and reliably obtain and use advanced metering intelligence to improve customer service, enhance operational efficiency, and increase revenues. Elster's AMI solutions enable utilities to cost-effectively generate, deliver, manage, and conserve the life-essential resources of gas, electricity, and water.

Elster has a staff of over 7,500 serving customers globally in North America, Central America, South America, Europe, Asia, Africa and the Middle East.

Elster Perfection  
436 North Eagle Street  
Geneva, OH 44041  
USA

T +1 440 415 1600  
F +1 866 828 6862

[www.elster-perfection.com](http://www.elster-perfection.com)

© 2009 Elster Perfection. All rights reserved.  
® Registered trademark of Elster Perfection Corporation.

Information contained herein is subject to change without notice. Product specifications may change. Contact your Elster Perfection representative for the most current product information. Printed in the United States.

EP-BR0003.1-EN-P - January 2009  
Supersedes EN-BR0003-EN-P